

March 8, 2022

For Immediate Release

Real Estate Investment Trust Securities Issuer
 1-6-5 Marunouchi, Chiyoda-ku, Tokyo
 Mitsubishi Estate Logistics REIT Investment Corporation
 Representative: Ken Takanashi, Executive Director
 (Securities Code: 3481)

Asset Management Company
 Mitsubishi Jisho Investment Advisors, Inc.
 Representative: Haruhiko Araki, President & CEO
 Contact: Ken Takanashi, Director, General Manager,
 Logistics REIT Management Department
 TEL: +81-3-3218-0030

Notice Concerning the Change of Representative Director, Directors, Executive Officers and Important Employees and Reorganization of Asset Management Company

Mitsubishi Estate Logistics REIT Investment Corporation (“MEL”) today announces that its asset management company, Mitsubishi Jisho Investment Advisors, Inc. (the “Asset Management Company”), has resolved at its board of directors’ meeting on March 8, 2022 to propose an agenda on an appointment of the new directors which will be addressed by the Asset Management Company’s board at the general shareholders’ meeting to be held on March 31, 2022 and to change the important employees and the appointment of executive officers.

Mr. Naoki Kuwabara, currently director, will be named as a candidate for representative director at the board of directors’ meeting after the general shareholders’ meeting.

In addition, the Asset Management Company will reorganize the corporate structure of the Asset Management Company (“Reorganization”) on April 1, 2022, as follows.

1. Resigning Directors (Effective date: March 31, 2022)
 - Director (full-time), Koichi Ueno
 - Director (full-time), Ken Takanashi
 - Director(part-time), Shojiro Kojima
2. Newly Appointed Representative Director (Effective date: April 1, 2022)
 - Representative Director, Naoki Kuwabara (currently Executive Vice President)
3. Newly Appointed Director (Effective date: April 1, 2022)
 - Director(part-time), Junji Inagawa
4. Newly Appointed Executive Officers (Effective date: April 1, 2022)
 - Chief Executive Officer, Tetsuya Masuda
 - Senior Executive Officer, Naoki Kuwabara
 - Senior Executive Officer, Hiroshi Shioiri
 - Executive Officer, Koichi Ueno
 - Executive Officer, Ken Takanashi
 - Executive Officer, Kazuyuki Takeda

5. Change of Important Employees (Effective date: April 1, 2022)

Position	New	Previous
General Manager, Fund Planning Department (Note 1,2)	Toshiyuki Arai	-
General Manager, Fund Management Department (Note 1,2)	Koichi Ueno (Note 3)	-
General Manager, Corporate Management Department	Kazuyuki Takeda (Note 3,4)	Koichi Ueno

General Manager, Internal Audit Department	Kensuke Funahashi	Hiroshi Mizukami
---	-------------------	------------------

Notes:

1. Important employees specified in the Financial Instruments and Exchange Act.
2. On April 1, 2022, the current Private Fund Management Department (General Manager: Toshiyuki Arai) will be abolished and the duties of the Private Fund Management Department will be transferred to the Fund Planning Department and Fund Management Department.
3. Concurrently serves as Executive Officer.
4. Concurrently serves as General Manager of Human Resources and General Affairs Dept.

6. Details of Reorganization (Effective date: April 1, 2022)

(1) Establishment of “Fund Planning Department” and “Fund Management Department”

The Asset Management Company will reorganize its current “Private Fund Management Department” into “Fund Planning Department” and “Fund Management Department” in order to promote and expand of the Private Fund business. Accordingly, the “Private Fund Management Department” will be eliminated.

(2) Establishment of “Sustainability Management Office”

The Asset Management Company has decided to establish “Sustainability Management Office” within the “Corporate Management Department” aiming for further enhancement of its commitment to sustainability.

The change complies with the Financial Instrument and Exchange Law, the Building Lots and Buildings Transaction Business Law and other applicable laws and regulations. Asset Management Company will carry out all necessary notifications and other procedures.

Please refer to the APPENDIX 1 for brief personnel history of the newly appointed directors, executive officers, general managers and all directors and key staff and the APPENDIX 2 for the Asset Management Company’s Organization Chart after the change.

For more information about Mitsubishi Estate Logistics REIT Investment Corporation, please visit:
<https://mel-reit.co.jp/en/>

APPENDIX 1
Brief Personal History of Newly Appointed Directors and General Managers

Position	Name	Brief Personal History	
Director (part-time)	Junji Inagawa	April 1992	Mitsubishi Estate, Co., Ltd.
		April 2008	Seconded to Rockefeller Group International, Inc.
		May 2013	Deputy General Manager of International Business Department and Investment Management Department, Mitsubishi Estate, Co., Ltd.
		April 2014	Deputy General Manager of Americas & Europe Business Department and Investment Management Business Department
		April 2016	Deputy General Manager of International Business Planning Department and Investment Management Business Department
		April 2017	Deputy General Manager Unit Leader of Investment Management Business Department
		April 2018	General Manager Unit Leader of Investment Management Business Department
		April 2019	Seconded to TA Realty, Inc. as Executive Vice President
		April 2022	General Manager of Investment Management Department, Mitsubishi Estate, Co., Ltd. Director (part-time) of Mitsubishi Jisho Investment Advisors, Inc. (planned)
General Manager, Internal Audit Department	Kensuke Funahashi	April 1979	Mitsubishi Estate, Co., Ltd.
		June 1988	Deputy General Manager of General Affairs Department
		April 2005	General Manager of General Affairs Department
		April 2012	President & Chief Executive Officer of MEC Human Resources, Inc.
		April 2016	Auditor of Mitsubishi Jisho Investment Advisors, Inc. And Auditor of MEC Business System Solutions Co., Ltd.
		June 2017	Auditor of Mitsubishi Jisho Sekkei Inc. And Auditor of MEC Design International Corporation
		Jun 2020	Mitsubishi Estate, Co., Ltd. Home-based Advisor
		April 2022	General Manager, Internal Audit Department of Mitsubishi Jisho Investment Advisors, Inc. (planned)

Asset Management Company's Directors and Key Staff (Effective Date: April 1, 2022)

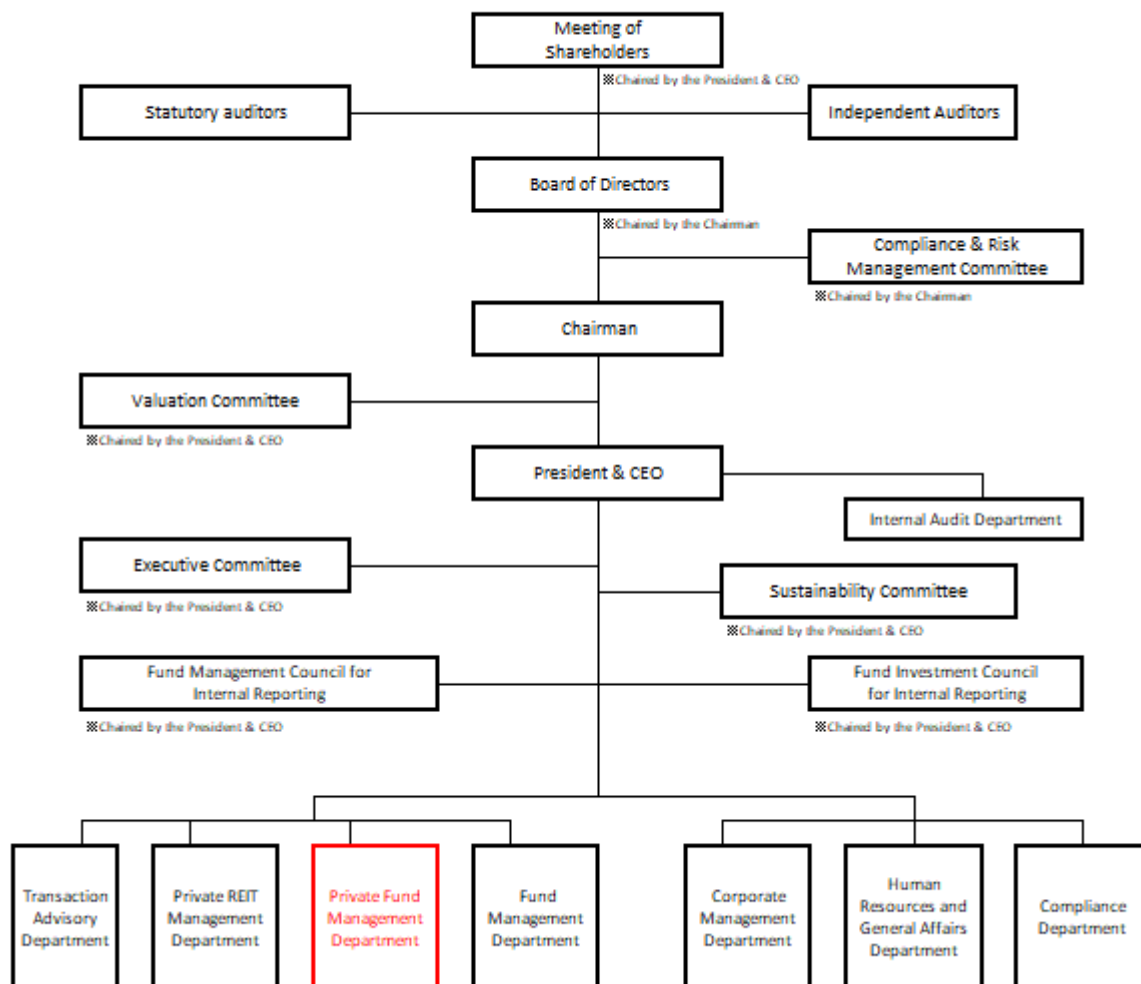
Position	Name
Representative Director& CEO	Tetsuya Masuda
Representative Director, Senior Executive Officer	Naoki Kuwabara
Director, Senior Executive Officer	Hiroshi Shioiri
Director (part-time)	Junji Inagawa
Auditor (part-time)	Kojiro Yoshizu
Auditor (part-time)	Tatsuya Tsuyusak
Executive Officer	Koichi Ueno
Executive Officer	Ken Takanashi
Executive Officer	Kazuyuki Takeda

General Manager, Transaction Advisory Department	Hiroshi Shioiri (concurrently Director, Senior Executive Officer)
General Manager, Private REIT Management Department	Takuya Yokota
General Manager, Fund Planning Department	Toshiyuki Arai
General Manager, Fund Management Department	Koichi Ueno (concurrently Executive Officer)
General Manager, Logistics REIT Management Department	Ken Takanashi (concurrently Executive Officer)
General Manager, Human Resources and General Affairs Department and Corporate Management Department	Kazuyuki Takeda (concurrently Executive Officer)
General Manager, Compliance Department	Naoki Kuwabara (concurrently Representative Director, Senior Executive Officer)
General Manager, Internal Audit Department	Kensuke Funahashi

APPENDIX 2

Asset Management Company's Organization Chart
(Before Reorganization)

Organizational chart of Mitsubishi Jisho Investment Advisors, Inc.



(After Reorganization)

Organizational chart of Mitsubishi Jisho Investment Advisors, Inc.

