



Press Release

August 8, 2023

Company name: Kanamic Network Co., Ltd.
Representative: Takuma Yamamoto, Representative
Director and President
(Securities code: 3939, TSE Prime Market)

**Long-term Care Industry Major NICHII HOLDINGS Adopts
Kanamic Cloud Services as Long-term Care System**

Kanamic cloud services, provided by Kanamic Network Co., Ltd. (Head Office: Shibuya-ku, Tokyo, Representative Director and President: Takuma Yamamoto; hereinafter “the Company”), have been adopted by NICHII HOLDINGS CO., LTD. (Head Office: Chiyoda-ku, Tokyo; Representative Director, President and Chief Executive Officer: Nobusuke Mori; hereinafter "NICHII HOLDINGS"), which has begun introducing Kanamic cloud services at the long-term care sites of its subsidiary NICHII GAKKAN CO., LTD. to renew the long-term care business system and improve operational efficiency and productivity.



■ **Background to Introduction**

NICHII HOLDINGS provides “total long-term care services” to meet customer needs ranging from in-home to residential care in 47 prefectures nationwide. It is the largest group in the long-term care industry both in terms of the number of long-term care offices and the number of services offered. Since the inception of the long-term care insurance system in 2000, it has been using its own on-premise long-term care system but has adopted Kanamic cloud services from the perspective of streamlining operations, centralizing information management, analyzing information in real time, and linking with other systems.

■ Main Points of System Adoption



Contributing to cost reductions

Switching to cloud services reduces server maintenance and management costs and achieves speed in system updates, including compliance with legal revisions to long-term care insurance, and reductions in costs for system updates.



Realizing improvements in productivity

Improvements in productivity are realized by switching from preparation of paper-based forms and record keeping work to use of home visit care records (Kanaeru-touch) using a smartphone. Switch from paper-based operations to use of ICT



Realizing greater efficiency in management operations

Use of Kanamic cloud services realizes centralized management of customer information at corporations, reflection of nationwide site information in data in real time, and faster data analysis.



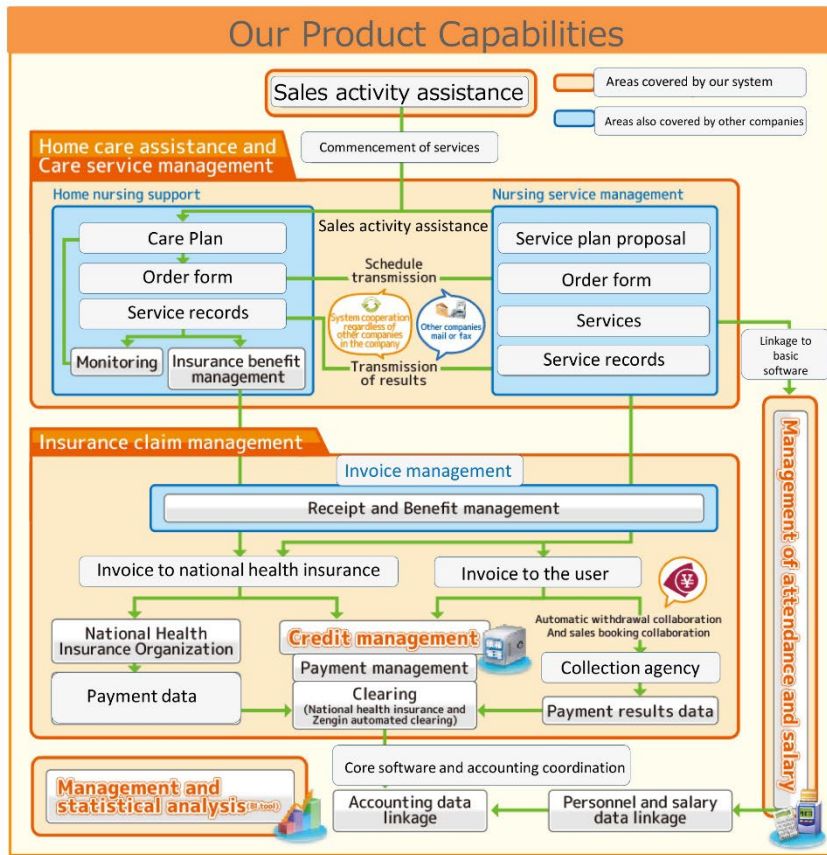
Realizing business development with outstanding scalability and flexibility

The scalability and flexibility of Kanamic cloud services contributes to business development in response to changes in future social conditions, and further business development and growth.

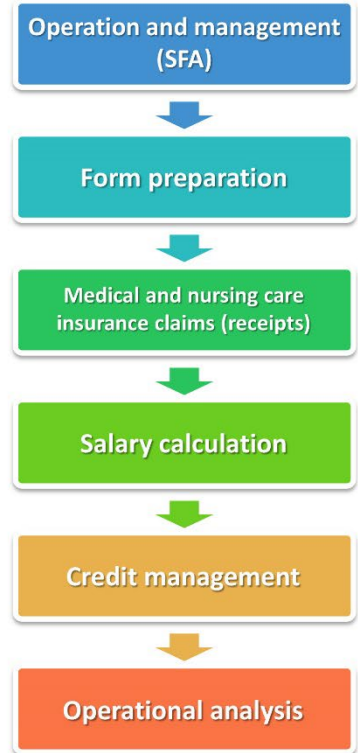


Strengthening security measures and internal control

Utilizing the advanced security standard functions of Kanamic cloud services and establishing the scope of use within the system by setting authorizations for each staff member strengthens security measures and internal controls, such as setting authorizations for the scope of use and viewing.



Extensive lineup supporting the management of nursing care business



[Signing ceremony]



Comments from NICHII HOLDINGS

We have adopted Kanamic cloud services, which have an extensive track record of implementation, and will make further efforts to improve productivity, including future business scalability, prompt compliance with legal revisions, and greater efficiency in operations through introduction of ICT by switching our long-term care system to the cloud.

We have confidence and hope that Kanamic Network is a company with which we can build a strong partnership in the future development of our company.

Going forward, we will promote even more efficient business through the use of Kanamic cloud services with a commitment by both companies to meeting the challenge of building a better future for long-term care.

NICHII HOLDINGS CO., LTD.

Nobusuke Mori, Representative Director, President and Chief Executive Officer

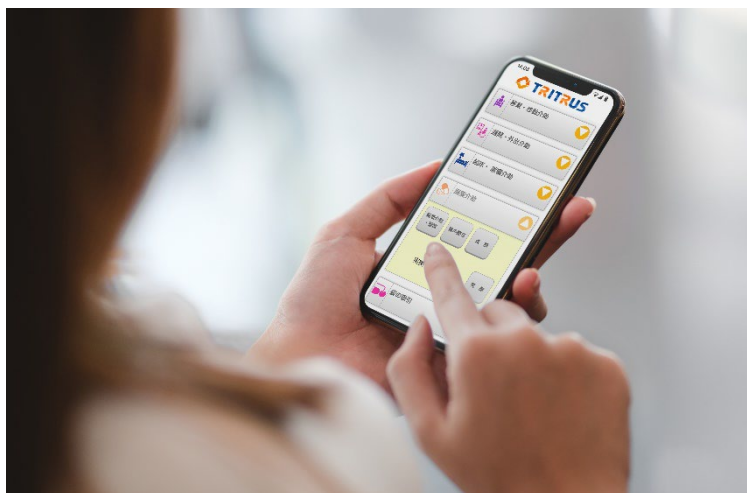
Kanamic Network Co., Ltd. has a profound knowledge of the long-term care sector, with founder and Chairman Minoru Yamamoto contributing to the launch of the long-term care insurance system, and the company's outstanding engineers, including President Takuma Yamamoto, have tirelessly worked with us.

I would like to take this opportunity to express my heartfelt gratitude for all of your efforts.

NICHII HOLDINGS CO., LTD.

Yasuhiro Matsuda, CIO

[Kanamic cloud services: Usage example]



■ About “Kanamic Cloud Services”

Kanamic cloud services are community collaborative services that enable inter-professional communication for local governments, medical associations, and long-term care service providers in order to contribute to the realization of the community-based comprehensive care system required by a super elderly society. Our lineup includes information sharing systems for inter-professional and inter-company communication and business systems for long-term care service providers.

Inquiries

Administration Department, Kanamic Network Co., Ltd.

Address: 31st Floor, Ebisu Garden Place Tower, 4-20-3 Ebisu, Shibuya-ku, Tokyo 150-6031

TEL 03-5798-3955

FAX 03-5798-3951