

Notice: This document is an translation of the original Japanese document and is only for reference purposes. In the event of any discrepancy between this translated document and the original Japanese document, the latter shall prevail.

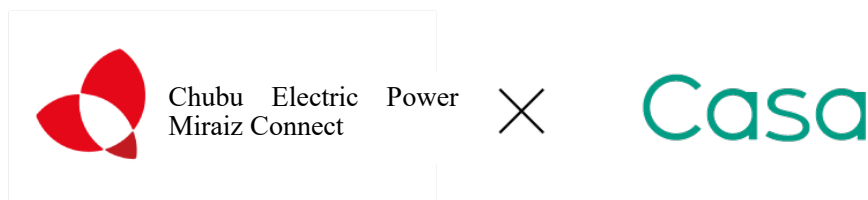
August 30, 2023



Casa Inc.

**Partnership with Chubu Electric Power Miraiz Connect, Inc.
Announcement to commence providing monitoring service by making use of
electricity usage data.**

Casa Inc. (Head office: Shinjuku-ku, Tokyo, Representative Director & President, Mr. Seigo Miyaji, hereinafter “Casa”) has formed a partnership with Chubu Electric Power Miraiz Connect, Inc. (Head office: Nagoya City, Aichi Prefecture, Representative Director & President: Mr. Mitsuteru Akiyama, hereinafter "Chubu Electric Power Miraiz Connect") a subsidiary of Chubu Electric Power Co., Inc. and Mitsubishi Corporation and shall commence providing new rent guarantee service "Direct Wide Monitoring Plan" accompanied by a monitoring service.






<Background>

As the number of elderly single-person households increases, 66 % of real estate owners and real estate management companies with the views of “some kind of reluctance” to elderly rental housing according to the survey by Ministry of Land, Infrastructure, Transport and Tourism. Moreover, there are also survey results that one in four elderly people have experienced being denied housing due to their age. As such, the number of elderly people who cannot lease a house has been increasing. On another front, the vacancy rate has been increasing year by year due to decreasing birthrates and population decline. Thus, accepting elderly tenants on a proactive basis has become an important issue as empty room measure.

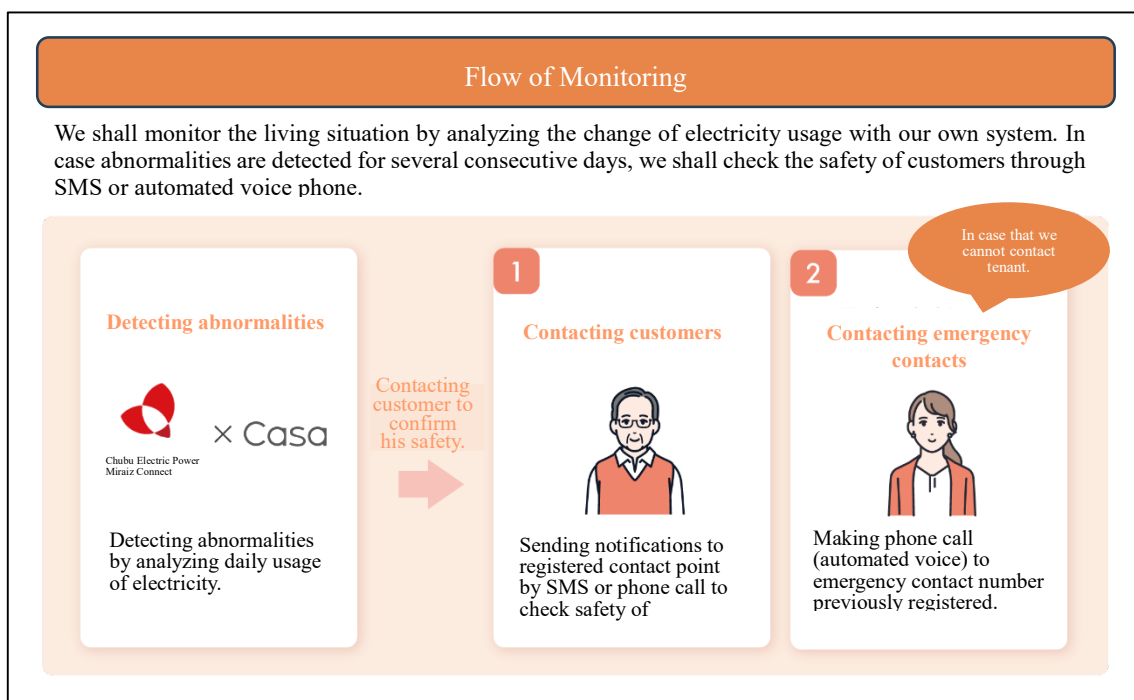
Notice: This document is an translation of the original Japanese document and is only for reference purposes. In the event of any discrepancy between this translated document and the original Japanese document, the latter shall prevail.

<Summary on service>

 <p>Point 1</p>	 <p>Point 2</p>	 <p>Point 3</p>
<p>Rent Guarantee Service</p> <p>The guarantor is not required since Casa acts as joint</p>	<p>Rent Collection Service</p> <p>As the rent is paid through an automatic bank account withdrawal, you can save the trouble of making bank transfer.</p>	<p>Monitoring Service</p> <p>We shall monitor the living situation of tenants by obtaining the electricity usage data from smart meter.</p>

“Direct Wide Monitoring Plan” is new rent guarantee service accompanied by “Terashite R”, a monitoring service provided by Chubu Electric Power Miraiz Connect in addition to the conventional services consisting of rent collection agency service, rent guarantee service and lonely death insurance for elderly person living alone. “Terashi R” is the service to confirm the safety to person himself, family member and real estate management companies by detecting abnormalities in living situation of tenants based on the electricity usage data obtained from smart data installed in rental property. It is not necessary to install devices such as monitoring camera and sensor and prepare Wi-Fi environment, it is characterized by making initial implementation cost free and enabling customers to use this service at affordable monthly fee.

<Flow of service>



Notice: This document is an translation of the original Japanese document and is only for reference purposes. In the event of any discrepancy between this translated document and the original Japanese document, the latter shall prevail.

Both companies shall do our utmost effort to solve the issue of elderly housing refuse crisis and improve the occupancy rate of rental properties through this service, contribute to the maintenance of the sound living environment for people and the development of lifestyle and culture, and realize the prosperous society.

Starting with the release of this service in Chubu Region, we shall incrementally expand the service offering areas to nationwide beginning with Tokyo metropolitan area from October 2023.

Incidentally, we assume that the impact of this partnership on business result shall be immaterial. If any matters requiring disclosure arise, we shall promptly announce them.

Chubu Electric Power Miraiz Connect, Inc.

Corporate name: Chubu Electric Power Miraiz Connect, Inc.
Location: Sakae 4-5-3, Naka-ku, Nagoya City, Aichi Prefecture
Representative Director: President, Mr. Mitsuteru Akiyama
URL: <https://miraiz-connect.co.jp/>

Casa Inc.

Corporate name: Casa Inc.
Location: Nishishinjuku 2-6-1, Shinjuku-ku, Tokyo
Representative Director: President, Mr. Seigo Miyaji
URL: <https://casa-inc.co.jp/>

【Contact information】

Casa Inc. Investor Relation Division
Ticker code: 7196 Tokyo Stock Exchange Prime
TEL : 03-5339-1143
MAIL: contact@casa-inc.co.jp
